

Exhibitions 2013

No Place Like Home

Main Gallery

January 22 – April 4, 2013

The home is not only where the heart is, but also a site for politics and the imagination. While the news floods with coverage of foreclosures, vacancies, homelessness, and property values, entertainment media celebrates real estate shenanigans and home renovations. This exhibition includes work of contemporary artists grappling with the physical and psychological implications of “home.”

Includes the work of Corinne May Botz, Marisa DiPaola, Kate Gilmore, Thomas Green, Mikhail Gubin, Louise Halsey, Sarah Hoskins, Aron Johnston, Stephen Lorber, George Lorio, Jeanette May, Caitlin Parker, Martha Rosler, David H. Wells

This exhibition is accompanied by a catalog with contributions by Anonda Bell, Caren King Choi, Robert Fishman, Winifred Gallagher, Sean Godsell, and Marjetica Potrč.



George Lorio, *Buena Vida*, 2011, mixed media installation, 42”x60”x60”, courtesy of the artist

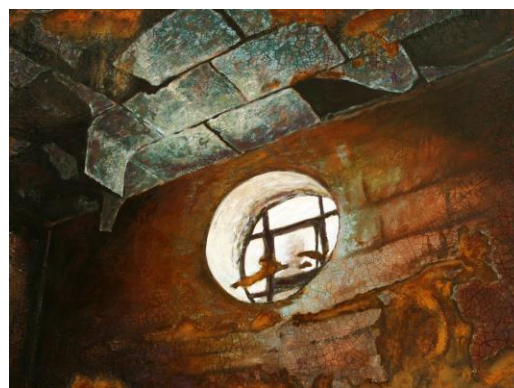
Marc D’Agusto: Forgotten Place

Orbit I Gallery

January 22 – July 24, 2013

Marc D’Agusto’s multilayered work delves into ideas of transformation, renewal, and the passing of time. Using rust, cracks, and fissures in the surface of his work, D’Agusto draws attention to the past while utilizing images of the human body, architectural forms, and space to suggest rebirth and regeneration. He writes, “Like a molting cicada shedding its past life, my work explores traces of history and alludes to new beginnings.”

Includes the work of Marc D’Agusto



Marc D’Agusto, *Window*, 2007, acrylic, iron oxide, copper oxide on canvas, 36”x48”, courtesy of the artist



Ben Georgia, *City Lights III*, 2009, oil on canvas, 48"x60", courtesy of the artist

Primary Essences: Ben Georgia

Orbit II Gallery

January 22 – June 4, 2013

For painter Ben Georgia, abstraction offers the possibility of a fresh mode of communication. Georgia seeks a language that surpasses representation and the fleeting concerns of the moment, reaching towards expressing the emotional depths of human experience. Georgia writes, "I work to create something on the canvas which is not of this concrete, external world, and imaginary vision which I see from the start on the blank, white canvas and where the beauty and strength of the painting compensate for and counteract the tragedy and decay of life."

Includes the work of Ben Georgia

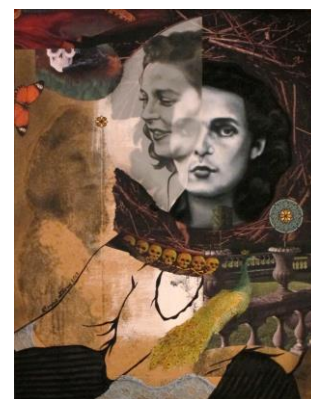
Authors & Artists: Portraits by Bonnie Gloris

Pequod Deck

January 22 – July 24, 2013

"Authors & Artists" is an ongoing series of portraits in which Bonnie Gloris mixes realistic portraiture with more ambiguous elements to delve into the personalities of her subjects, inviting viewers to form their own conclusions and decipher the works line by line. The portraits are small in scale and as intimate as family photographs, their kitschy frames interacting with their subjects' elevated fame and stature.

Includes the work of Bonnie Gloris



Bonnie Gloris, *Leonora Carrington*, 2012, mixed media on Masonite, 18"x14", courtesy of the artist



Janice McDonnell, *Christina Riggs*, 2010-2011, oil on canvas, 36"x30", courtesy of the artist

Janice McDonnell: The Death Penalty Ladies Society

Criminal Justice Gallery

January 22 – July 24, 2013

Janice McDonnell writes: "Since the death penalty was reinstated in this country in 1976 twelve women have been executed... Drawing from John Singer Sargent's portraiture for inspiration, I've recast these women in the role of socialites; portraying them in a new, genteel light, elevating their status in our society, and confronting the treatment of the privileged in today's world. Their crimes were heinous, and their victims were real. And while not condoning their acts of violence, I question our double standards on how we as society judge its members."

Includes the work of Janice McDonnell



Soma, Trickster & Myself: David D. Oquendo

Messier Gallery

September 4, 2012 – July 24, 2013

David D. Oquendo leads his audience into a world populated with characters of indefinite human-animal-plant-fungus origin, each signifying a facet of Oquendo's exploration of religion, culture, and personal growth. The work rings with pop culture and commercial imagery, yet engages questions that have

remained relevant throughout human history.

Includes the work of David D. Oquendo.



Experimentation: Senior Graphic Design Exhibition

Main Gallery

April 11 – 25, 2013

An annual exhibition of work to be included in the professional portfolio of graduating Graphic Design seniors from the Arts, Culture, & Media Department at Rutgers-Newark.

Includes the work of Crystal Brown, Marie Yuki Denny, John Florek, Josh Ford, Yukihiro Fujita, Priscila Jerez, Christopher Kennedy, Mary Leriche, Lauren Lovingham, Juliana Monteiro, Krupal Patel, Bryan Rodriguez, Neil Waldron, Eric Yeh.

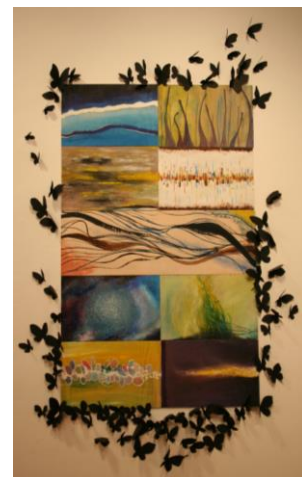
Starting Point: Senior Fine Art Exhibition

Main Gallery

May 2 – 16, 2013

An annual exhibition celebrating the achievements of graduating Fine Arts seniors from the Arts, Culture, & Media Department at Rutgers – Newark.

Includes the work of Ian Costello, Snyder Desein, Audreya Jackson, Alyssa Lawler, Alisa Lawrence-Johnson, Roberta Lombardi, Ca Nguyen, Timothy Resurreccion, Sasha Sempkowski, Nikolaos Stavrou-Wilson, Joanna Trawinski, Carol Woo, Sanna Zhao



Ca Nguyen, *Black Death*, 2013, acrylic on wood, paper, dimensions variable, Courtesy of the artist

Right Here, Right Now

Main Gallery

May 23 – July 24, 2013

Drawing from the circle of people within conceptual and geographic proximity of the Paul Robeson Galleries, this exhibition features work of artists who support the gallery through participation in its activities as preparators, educators, and/or as members of the Advisory Board. Includes the work of Daniel Brophy, Diane June, Omisanya Karade, Nell Painter, Duda Penteadó, German Pitre, Kevin Blythe Sampson, and Alison Weld.



German Pitre, *Black Flag*, 2008, mixed media on canvas, 63"x68", Courtesy of the artist



Polixeni Papapetrou, *Salt Man*, 2013, pigment ink print, 51.5"x51.5", Courtesy of the artist and Jenkins Johnson Gallery, New York

Hair

Main Gallery

September 3 – December 24, 2013

Hair grows everywhere on the human body except the palms of the hands, soles of the feet, eyelids, and lips. This exhibition will explore many ways in which hair is artistically represented, including cultural, anthropological, historical, and physical.

Includes the work of Terry Boddie, Stephanie T. Booth, Flora Choi, Andrea Cote, Marisa DiPaola, Zachary Fabri, Cassandra Holden, Colby Jennings, Stephanie Keith, Jessica Lagunas, So Yoon Lym, Althea Murphy-Price, Polixeni Papapetrou, Babs Reingold, Annette Rusin, Yoland Skeete, Aaron Smith, Kristen Tinari, Winnie Truong, Jessica Tsai, Fo Wilson.

This exhibition is accompanied by a catalog with contributions by Anonda Bell, Caren King Choi, Deborah Lutz, Rebecca Michaels, and Lori L. Tharps

An Invisible City Revealed: Sunmarie Allen-Burns

Orbit I Gallery

September 3 – December 24, 2013

Sunmarie Allen-Burns is a New Jersey artist and educator who seeks to challenge viewers' pre-conceived notions about life and to illuminate the innate beauty and goodness of the world around her. Having been raised in Newark, New Jersey, a common theme found throughout many of her works revolves around the hidden beauty of life in Newark.

Includes the work of Sunmarie Allen-Burns.



Sunmarie Allen-Burns, *Pulaski Skyway*, 2010, oil on canvas, 30"x40", Courtesy of the artist



Ned Drew, *Untitled (My God's Better Than Your God)*, 2013, mixed media, dimensions variable,

The Image Is the Message

Orbit II Gallery

September 3 – December 24, 2013

Curated by Patricia Kettenring, this exhibition features the work of prominent graphic designers Ned Drew and Ed Walter.

Pat Kettenring served for 11 years as the Executive Director of GlassRoots, Inc, a nonprofit glass arts and business skills program for youth. She was the Director of Business and the Arts at Rutgers-Newark for 23 years and a professor for the School of Public Affairs and Administration. She retired in 2012.

Ned Drew is a professor of graphic design at Rutgers University. He is the director of The Design Consortium, a student/teacher run design studio that focuses on non-profit, community-based projects. He is also a founding partner and creative director of the multi-disciplinary design firm, BRED based in NYC.

Ed Walter is the President and Design Director of Strategy Studio in NYC, where he has worked for almost thirty years. His work has included projects for clients in

healthcare, technology, financial, professional services, and non-profit organizations. He is a faculty member at Parsons The New School for Design. He has been published widely and lectures on design, typography and branding.

Includes the work of Ned Drew and Ed Walter.

Global Service in Action: Rutgers Students in Tanzania

Pequod Deck

September 3 – December 24, 2013

For the past three years, the Paul Robeson Campus Center has been committed to designing student development programming that challenges participants as they move through critical stages of identity development. Through a series of intentional service learning initiatives, we offer our students an opportunity to serve as global citizens and active social change agents.

This exhibition features photographs from the Robeson International Leadership Exchange. This ten-day initiative based in Tanzania and Zanzibar, encourages students to engage models of leadership through a global lens. This partnership with the University of Dar es Salaam and the College of New Jersey prepares and challenges Rutgers students to collaborate with faculty, student leaders and community organizers who are actively working to create social, political and economic change within their communities.

Includes the work of Rutgers faculty, staff, and students.





Carol Shapiro, *Framed at the Border*
(detail), 2013, mixed media,
dimensions variable,
Courtesy of the artist

Inside Out: Perspectives on Social Justice by Carol Shapiro

Criminal Justice Gallery

September 3 – July 30, 2014

"I am questioning, 'What is justice?' The need for innovation and risk in reform efforts and the impact of our prison industrial complex on poor families must be seriously considered. Too often, we overlook the imperative to incorporate creative methods to stimulate social justice reform. Family is used as a metaphor in my imagery encouraging the observer to engage in discourse and challenge assumptions. The title 'Inside-Out' refers to both the prisoner and the impact on the family dynamic."

Carol Shapiro visited her first prison at the age of 16, and has since been a powerful force in pushing justice reform. She studied art and criminology at Carnegie Mellon University and founded a not-for-profit organization called Family Justice. Family Justice uses the visual and performing arts to raise awareness and organize interventions that engage social networks and staff of correctional facilities. Shapiro's life has seen an inextricable twining of her passions for art and reform.

Includes the work of Carol Shapiro

Cake Soap Panorama: Kevin Darmanie

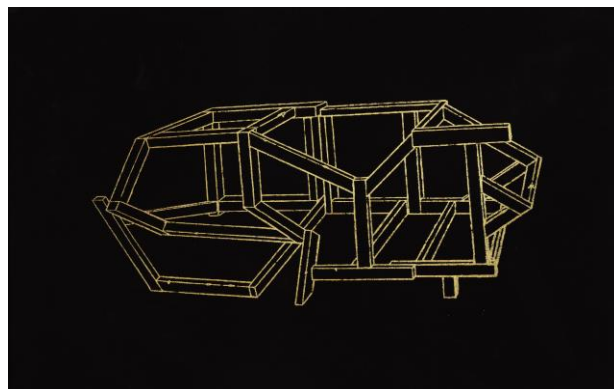
Messier Gallery

September 3, 2013 – July 24, 2014

Kevin Darmanie writes, *"The mural is an amalgamation of images drawn together to elicit the conflict and sense of possibility spawned from a blending of two identities: the distant aggressiveness of the Caribbean and the liberal individualism of the American. I employ motifs from my current body of work: a manual construction, a popular phrase, the artist as hero and a map of Trinidad reconfigured to express American sentiments. The work is a spying glass for freedom; the viewer perceives a freedom seemingly apparent in each identity from the confines of the latter identity. The piece also asks, how much of each identity and its social values are lost in exchange for immigrant self actualization?"*

After receiving his education in Trinidad & Tobago, Darmanie came to Newark and has since exhibited in a number of venues including Lex Leonard Gallery, Rupert Ravens Contemporary, Gallery Aferro, and the Paul Robeson Galleries. He is a largely self-taught artist with some formal training, whose work is comprised of comic books, works on paper, paintings, murals, and installations. His work melds such seemingly disparate elements as critical art theory and the techniques of fine art with comic illustration.

Includes the work of Kevin Darmanie



Kevin Darmanie, *Sketch for Cake Soap Panorama*,
2013, mixed media, dimensions variable, Courtesy
of the artist